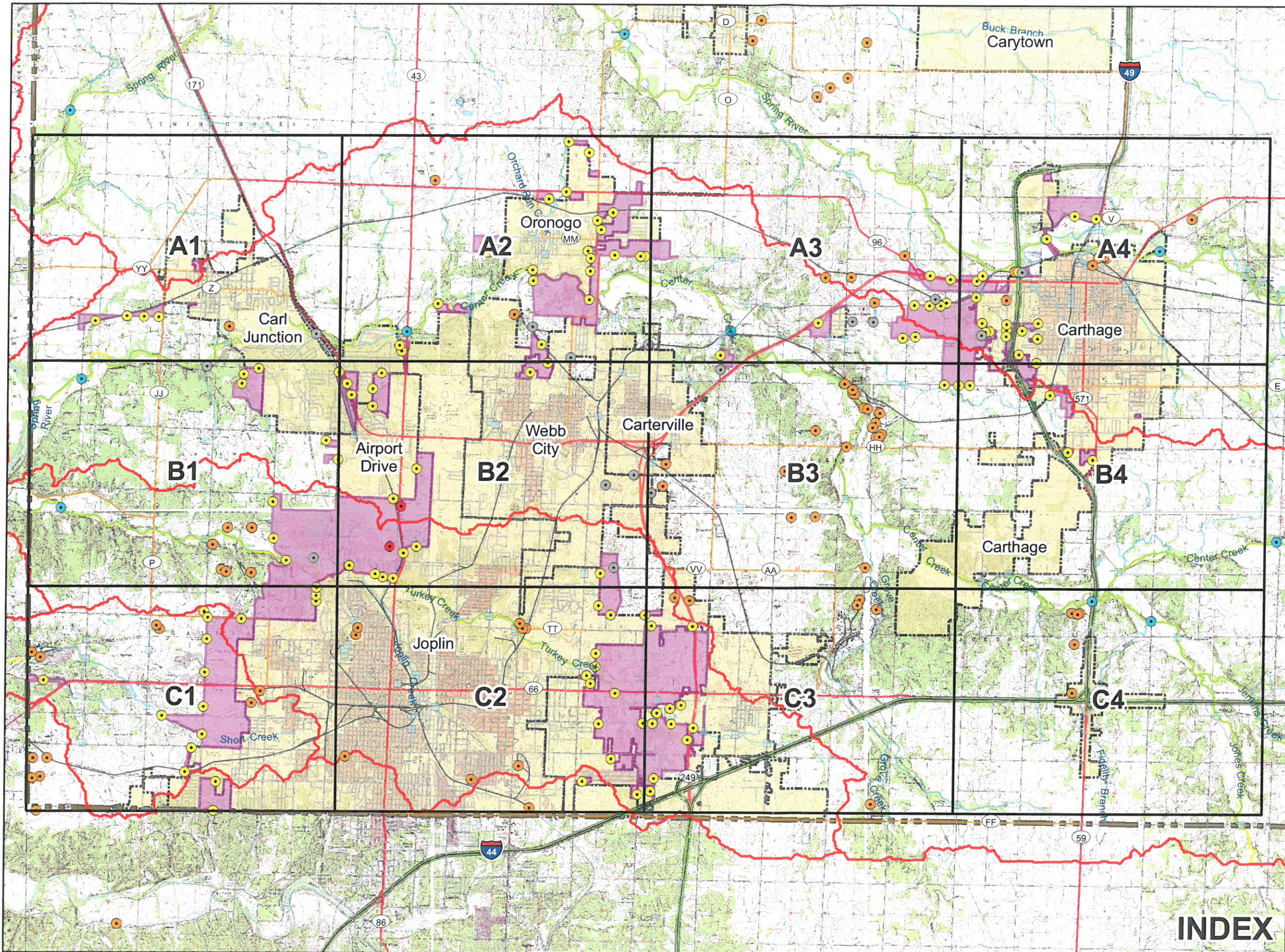


# Unincorporated Urbanized Areas in Jasper County, Missouri June 2016



- Detention
- Inactive Outfalls
- Active Outfalls
- Sampling Sites 2010
- DNR Outfalls
- ▭ Drainage Basins (Major)
- Bridges
- Rail Roads
- Streets
- Interstate
- State Highway
- Route
- U.S. Highway
- Unincorp. Urban Areas 2016
- Waterways
- 303d Impaired Streams 2016
- ▭ Jasper County Boundary
- ▭ Incorporated Areas 2016

The areas designated as Urbanized Unincorporated Areas are derived from the 2010 Census Urban Areas subtracting the areas that are presently within the limits of a municipality.

Map Date:  
June 8, 2016



1 inch = 8,000 feet



Tri-State Engineering  
702 S Main • Joplin, MO 64801  
Phone: (417) 781-0643  
www.tristate-engineering.com

**INDEX**

# Unincorporated Urbanized Areas in Jasper County, Missouri June 2016

- Detention
- Inactive Outfalls
- Active Outfalls
- Sampling Sites 2010
- DNR Outfalls
- Drainage Basins (Major)
- Bridges
- Rail Roads
- Streets
- Interstate
- State Highway
- Route
- U.S. Highway
- Unincorp. Urban Areas 2016
- Waterways
- 303d Impaired Streams 2016
- ▭ Jasper County Boundary
- ▭ Incorporated Areas 2016

The areas designated as Urbanized Unincorporated Areas are derived from the 2010 Census Urban Areas subtracting the areas that are presently within the limits of a municipality.

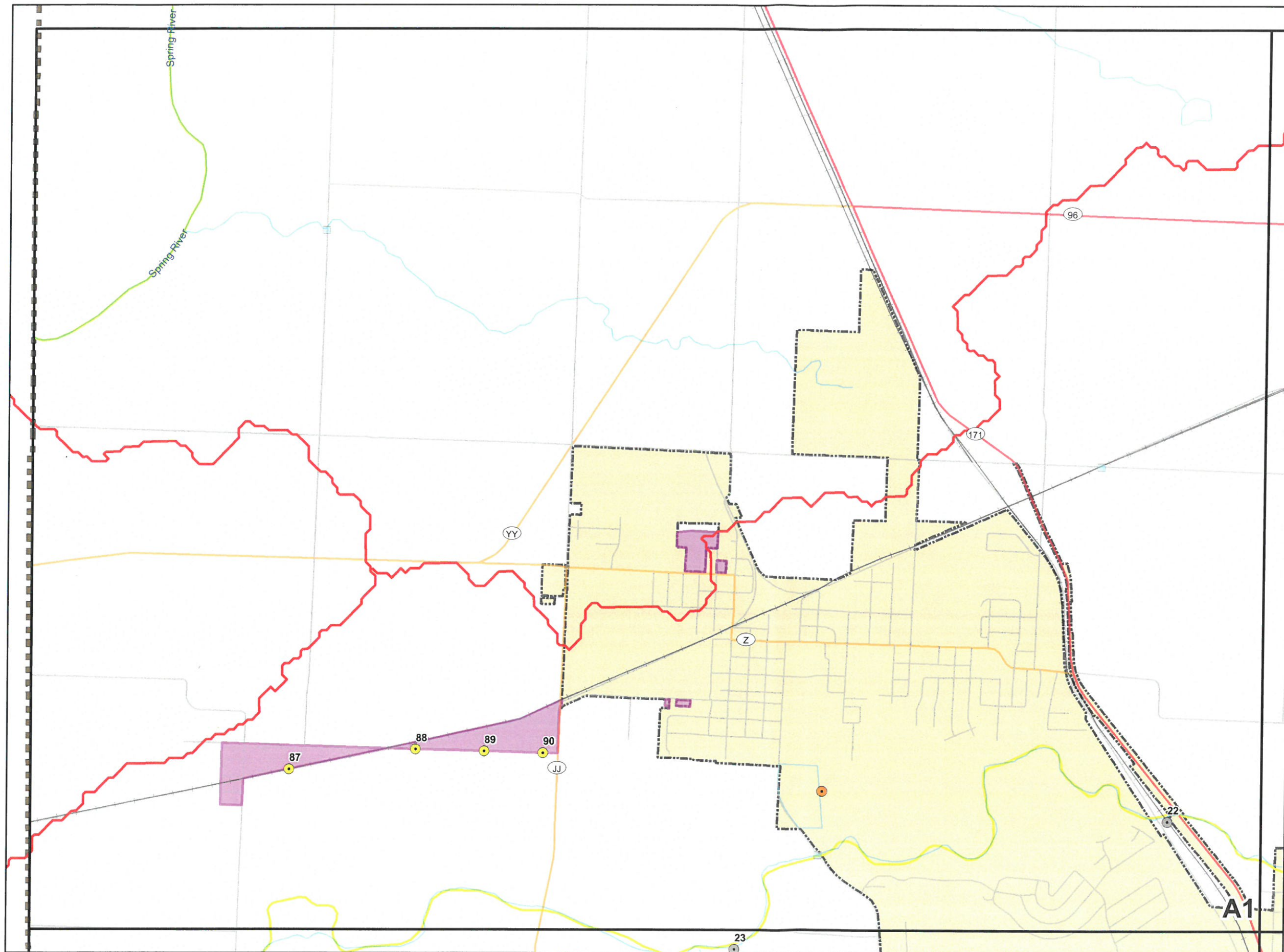
Map Date:  
June 8, 2016



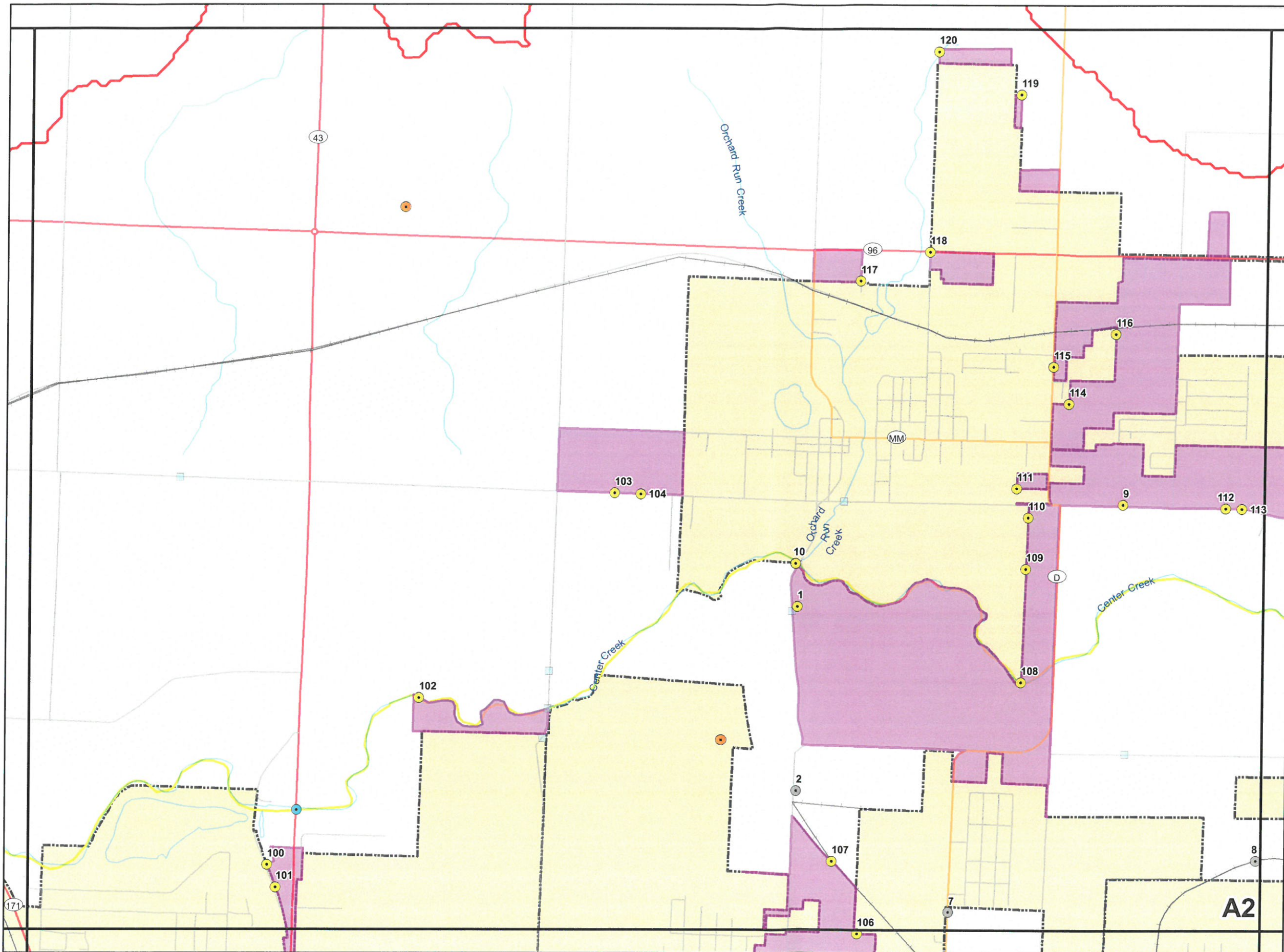
1 inch = 2,000 feet



Tri-State Engineering  
702 S Main • Joplin, MO 64801  
Phone: (417) 781-0643  
www.tristate-engineering.com



# Unincorporated Urbanized Areas in Jasper County, Missouri June 2016



- Detention
- Inactive Outfalls
- Active Outfalls
- Sampling Sites 2010
- DNR Outfalls
- Drainage Basins (Major)
- Bridges
- Rail Roads
- Streets
- Interstate
- State Highway
- Route
- U.S. Highway
- Unincorp. Urban Areas 2016
- Waterways
- 303d Impaired Streams 2016
- Jasper County Boundary
- Incorporated Areas 2016

The areas designated as Urbanized Unincorporated Areas are derived from the 2010 Census Urban Areas subtracting the areas that are presently within the limits of a municipality.

Map Date:  
June 8, 2016



1 inch = 2,000 feet



Tri-State Engineering  
702 S Main • Joplin, MO 64801  
Phone: (417) 781-0643  
www.tristate-engineering.com

A2

# Unincorporated Urbanized Areas in Jasper County, Missouri June 2016

- Detention
- Inactive Outfalls
- Active Outfalls
- Sampling Sites 2010
- DNR Outfalls
- Drainage Basins (Major)
- Bridges
- Rail Roads
- Streets
- Interstate
- State Highway
- Route
- U.S. Highway
- Unincorp. Urban Areas 2016
- Waterways
- 303d Impaired Streams 2016
- Jasper County Boundary
- IncorporatedAreas 2016

The areas designated as Urbanized Unincorporated Areas are derived from the 2010 Census Urban Areas subtracting the areas that are presently within the limits of a municipality.

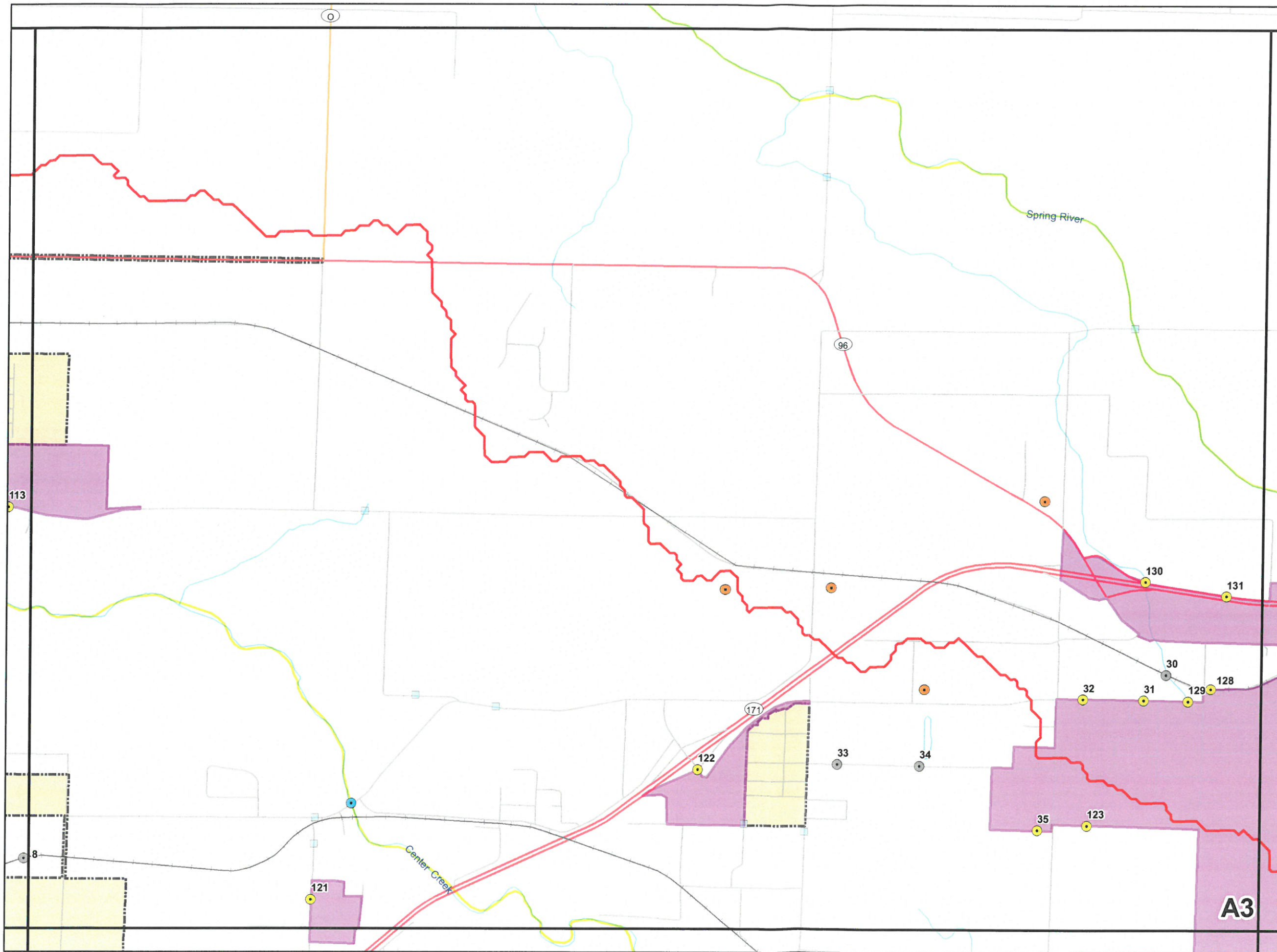
Map Date:  
June 8, 2016



1 inch = 2,000 feet



Tri-State Engineering  
702 S Main • Joplin, MO 64801  
Phone: (417) 781-0643  
www.tristate-engineering.com



# Unincorporated Urbanized Areas in Jasper County, Missouri June 2016

- Detention
- Inactive Outfalls
- Active Outfalls
- Sampling Sites 2010
- DNR Outfalls
- Drainage Basins (Major)
- Bridges
- Rail Roads
- Streets
- Interstate
- State Highway
- Route
- U.S. Highway
- Unincorp. Urban Areas 2016
- Waterways
- 303d Impaired Streams 2016
- Jasper County Boundary
- Incorporated Areas 2016

The areas designated as Urbanized Unincorporated Areas are derived from the 2010 Census Urban Areas subtracting the areas that are presently within the limits of a municipality.

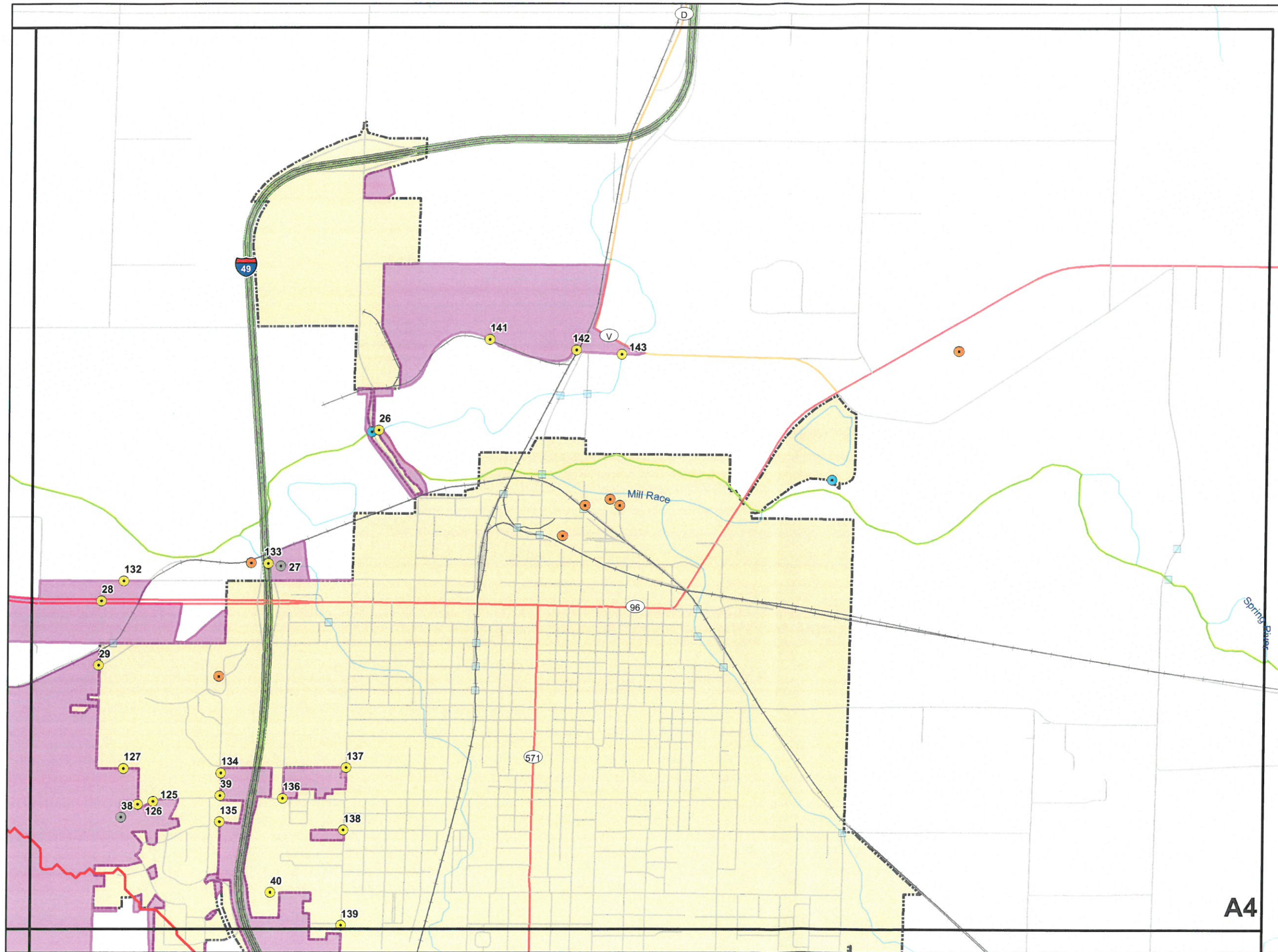
Map Date:  
June 8, 2016



1 inch = 2,000 feet



Tri-State Engineering  
702 S Main • Joplin, MO 64801  
Phone: (417) 781-0643  
www.tristate-engineering.com



A4

# Unincorporated Urbanized Areas in Jasper County, Missouri June 2016

- Detention
- Inactive Outfalls
- Active Outfalls
- Sampling Sites 2010
- DNR Outfalls
- Drainage Basins (Major)
- Bridges
- Rail Roads
- Streets
- Interstate
- State Highway
- Route
- U.S. Highway
- Unincorp. Urban Areas 2016
- Waterways
- 303d Impaired Streams 2016
- Jasper County Boundary
- Incorporated Areas 2016

The areas designated as Urbanized Unincorporated Areas are derived from the 2010 Census Urban Areas subtracting the areas that are presently within the limits of a municipality.

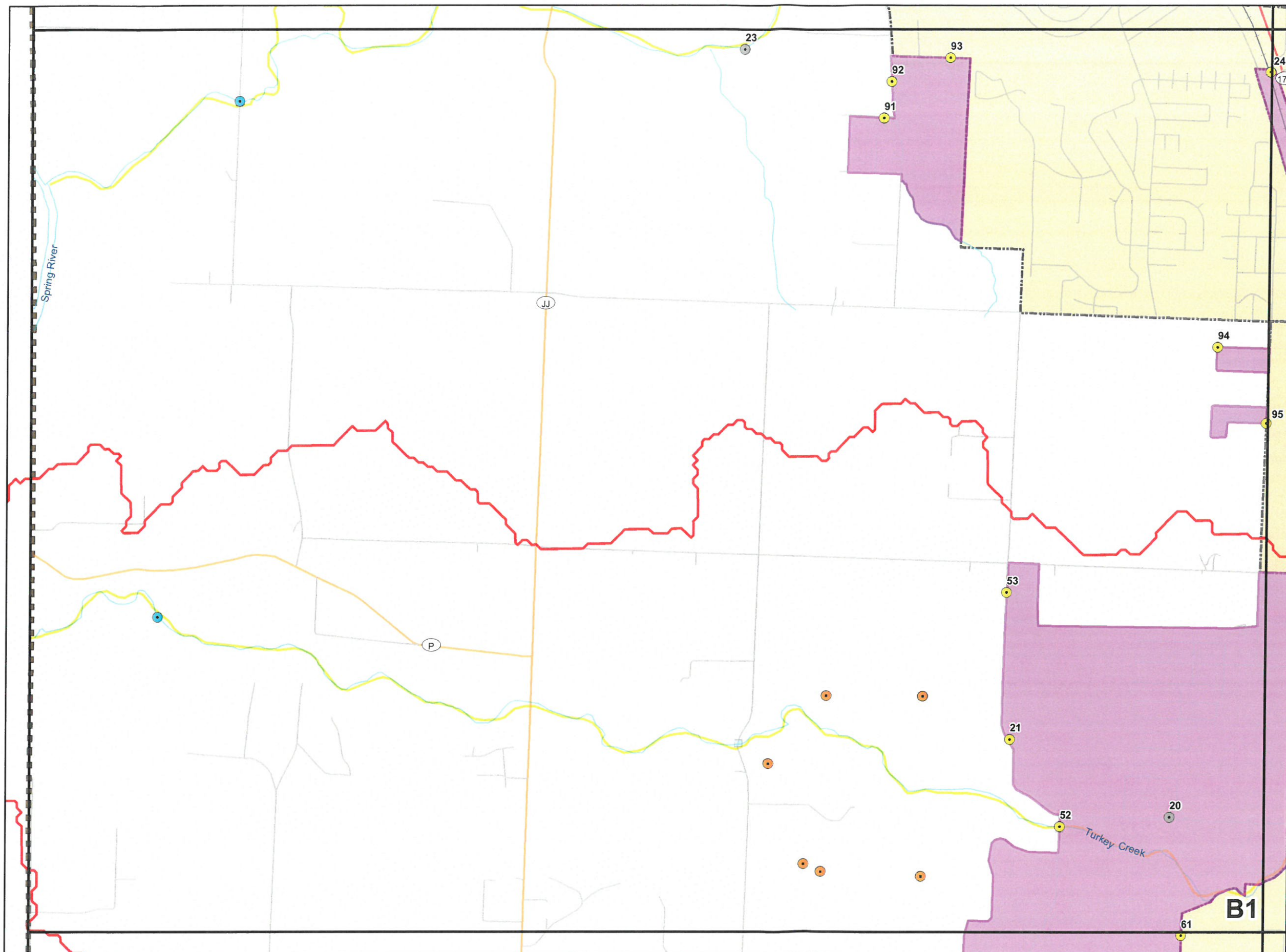
Map Date:  
June 8, 2016



1 inch = 2,000 feet



Tri-State Engineering  
702 S Main • Joplin, MO 64801  
Phone: (417) 781-0643  
[www.tristate-engineering.com](http://www.tristate-engineering.com)

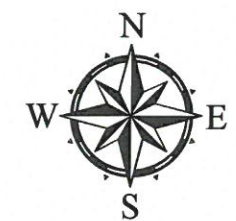


# Unincorporated Urbanized Areas in Jasper County, Missouri June 2016

- Detention
- Inactive Outfalls
- Active Outfalls
- Sampling Sites 2010
- DNR Outfalls
- Drainage Basins (Major)
- Bridges
- Rail Roads
- Streets
- Interstate
- State Highway
- Route
- U.S. Highway
- Unincorp. Urban Areas 2016
- Waterways
- 303d Impaired Streams 2016
- Jasper County Boundary
- Incorporated Areas 2016

The areas designated as Urbanized Unincorporated Areas are derived from the 2010 Census Urban Areas subtracting the areas that are presently within the limits of a municipality.

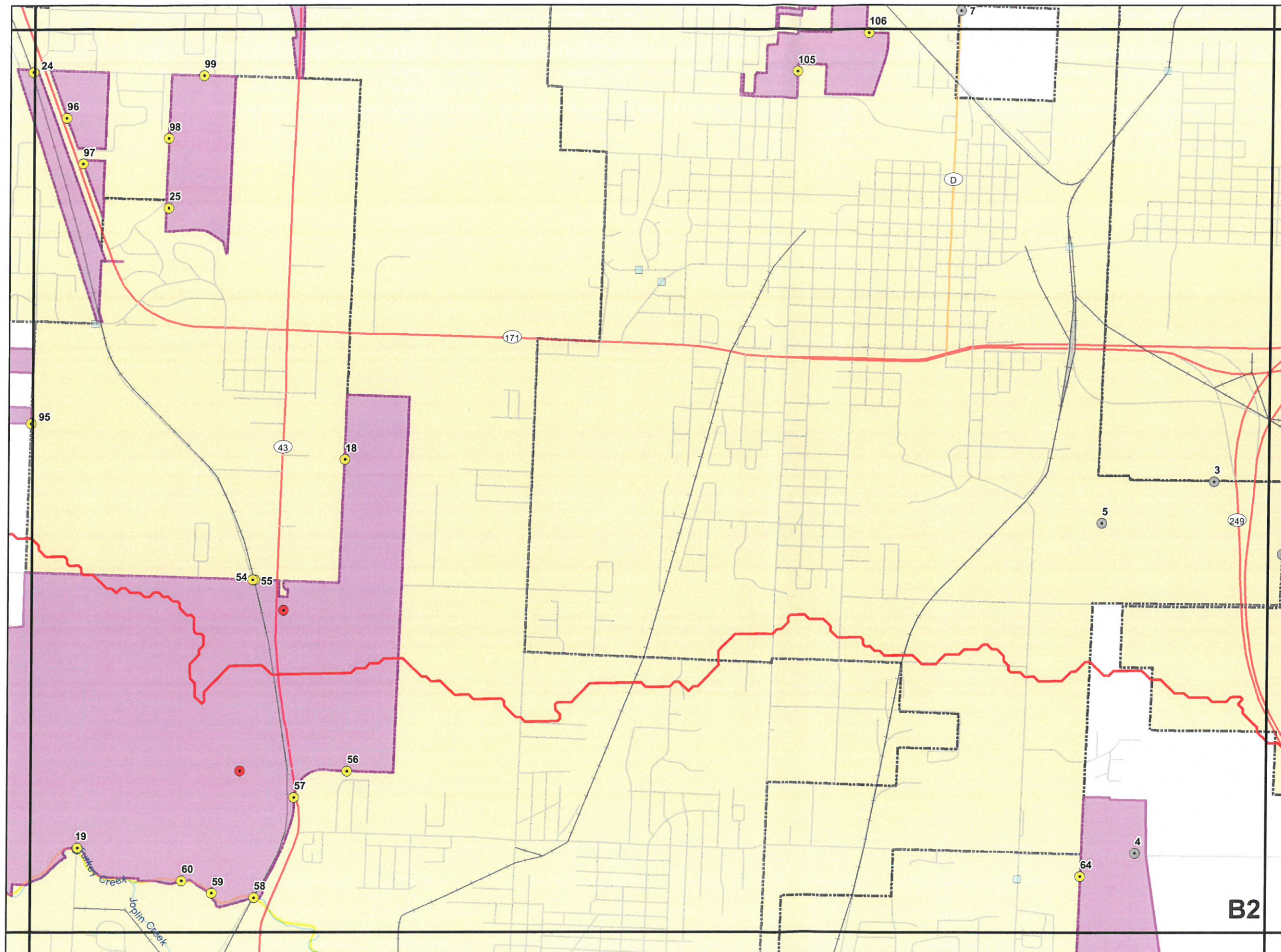
Map Date:  
June 8, 2016

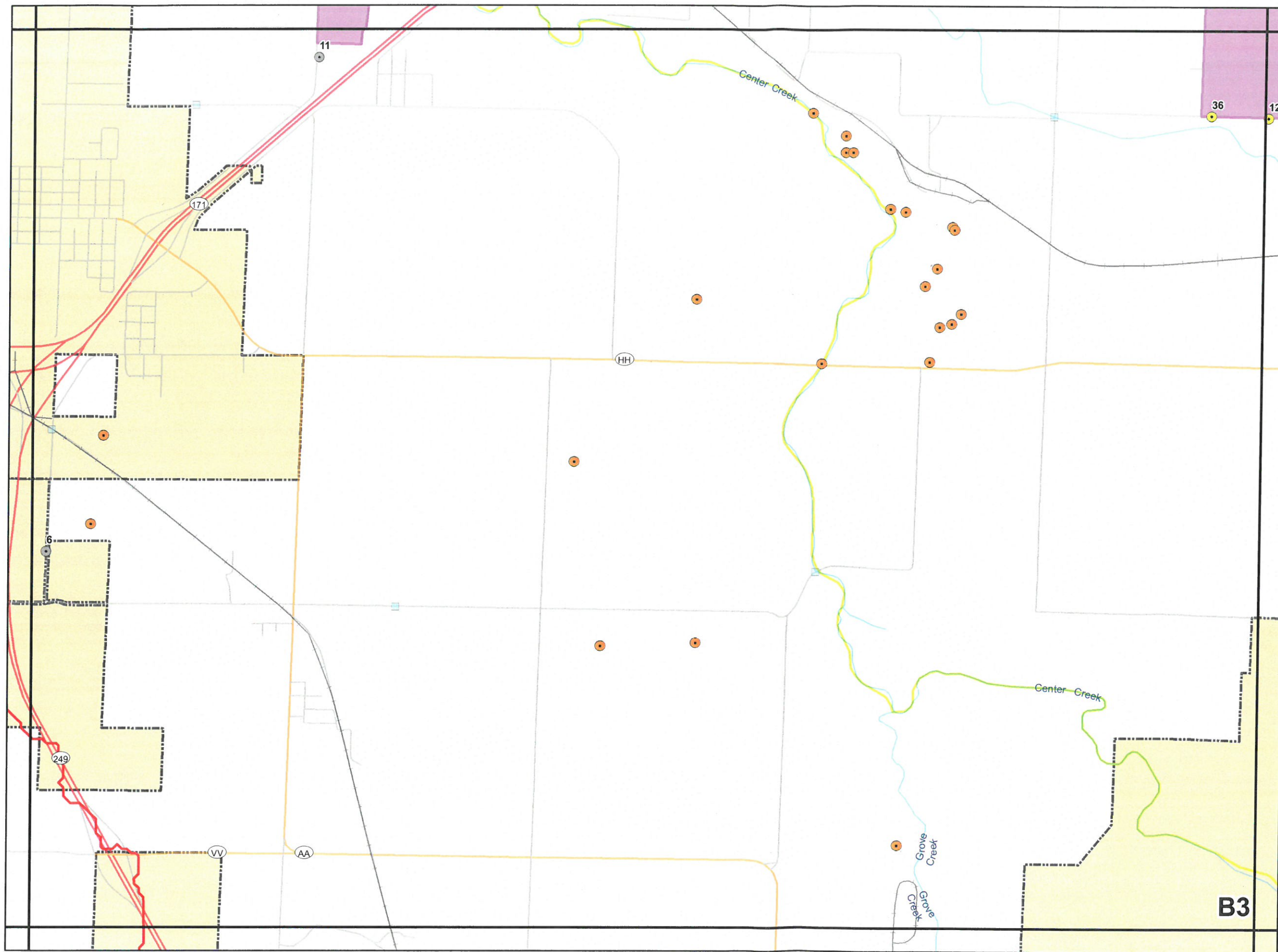


1 inch = 2,000 feet



Tri-State Engineering  
702 S Main • Joplin, MO 64801  
Phone: (417) 781-0643  
[www.tristate-engineering.com](http://www.tristate-engineering.com)





## Unincorporated Urbanized Areas in Jasper County, Missouri June 2016

- Detention
- Inactive Outfalls
- Active Outfalls
- Sampling Sites 2010
- DNR Outfalls
- Drainage Basins (Major)
- Bridges
- Rail Roads
- Streets
- Interstate
- State Highway
- Route
- U.S. Highway
- Unincorp. Urban Areas 2016
- Waterways
- 303d Impaired Streams 2016
- ▭ Jasper County Boundary
- ▭ Incorporated Areas 2016

The areas designated as Urbanized Unincorporated Areas are derived from the 2010 Census Urban Areas subtracting the areas that are presently within the limits of a municipality.

Map Date:  
June 8, 2016

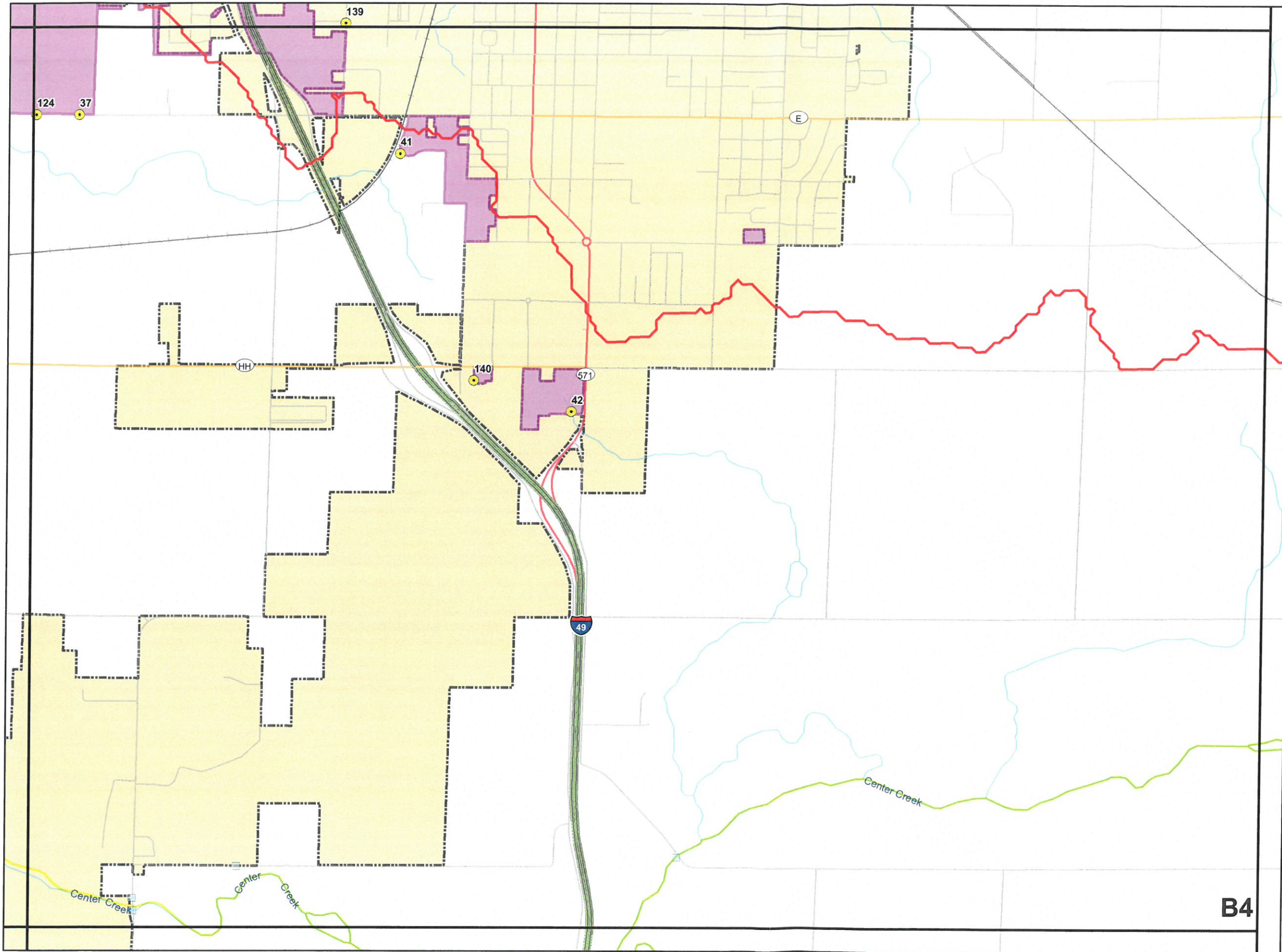


1 inch = 2,000 feet



Tri-State Engineering  
702 S Main • Joplin, MO 64801  
Phone: (417) 781-0643  
[www.tristate-engineering.com](http://www.tristate-engineering.com)





## Unincorporated Urbanized Areas in Jasper County, Missouri June 2016

- Detention
- Inactive Outfalls
- Active Outfalls
- Sampling Sites 2010
- DNR Outfalls
- Drainage Basins (Major)
- Bridges
- Rail Roads
- Streets
- Interstate
- State Highway
- Route
- U.S. Highway
- Unincorp. Urban Areas 2016
- Waterways
- 303d Impaired Streams 2016
- Jasper County Boundary
- Incorporated Areas 2016

The areas designated as Urbanized Unincorporated Areas are derived from the 2010 Census Urban Areas subtracting the areas that are presently within the limits of a municipality.

Map Date:  
June 8, 2016



1 inch = 2,000 feet

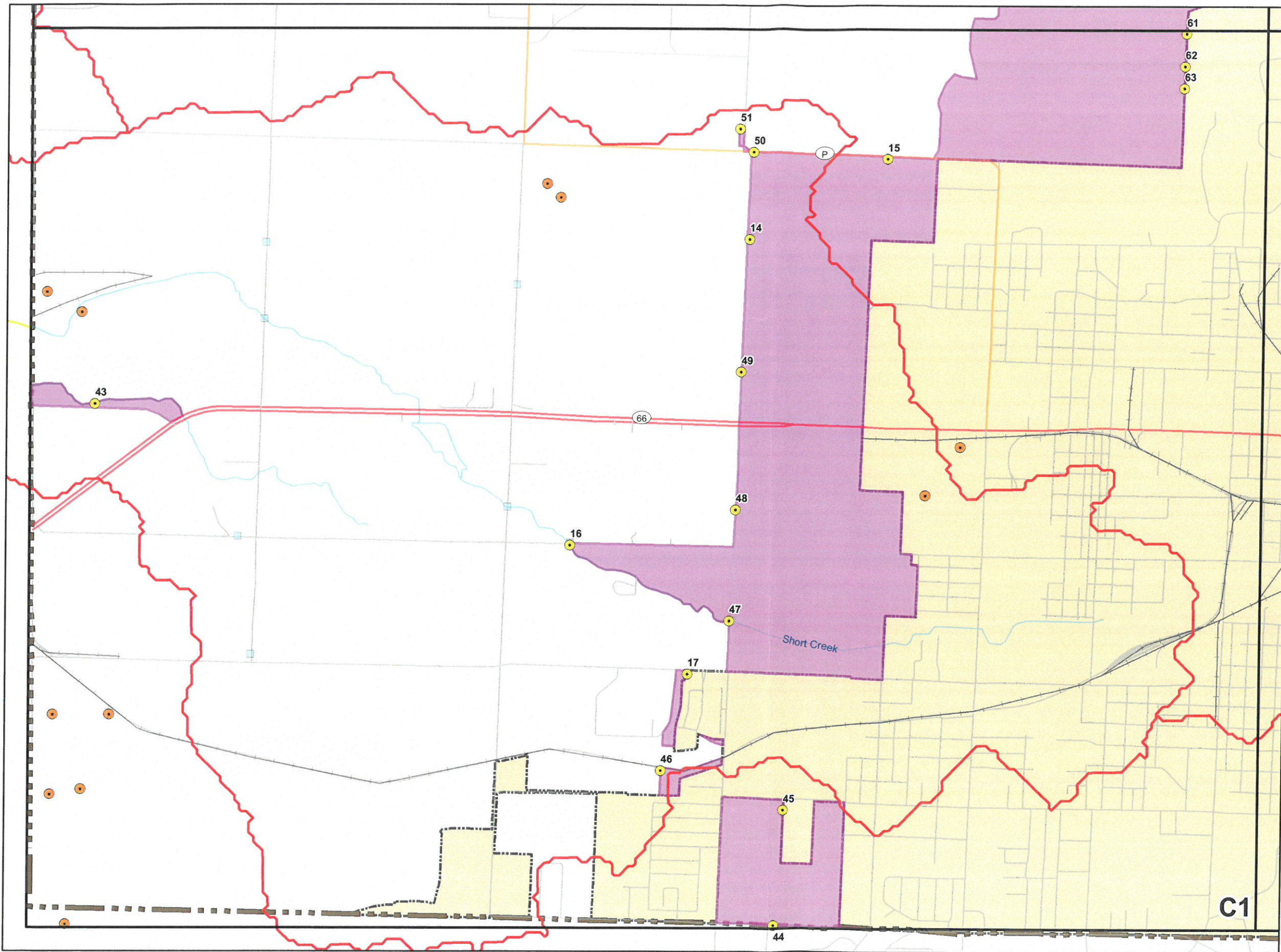


Tri-State Engineering  
702 S Main • Joplin, MO 64801  
Phone: (417) 781-0643  
[www.tristate-engineering.com](http://www.tristate-engineering.com)

**B4**

# Unincorporated Urbanized Areas in Jasper County, Missouri June 2016

- Detention
- Inactive Outfalls
- Active Outfalls
- Sampling Sites 2010
- DNR Outfalls
- Drainage Basins (Major)
- Bridges
- Rail Roads
- Streets
- Interstate
- State Highway
- Route
- U.S. Highway
- Unincorp. Urban Areas 2016
- Waterways
- 303d Impaired Streams 2016
- Jasper County Boundary
- Incorporated Areas 2016



The areas designated as Urbanized Unincorporated Areas are derived from the 2010 Census Urban Areas subtracting the areas that are presently within the limits of a municipality.

Map Date:  
June 8, 2016



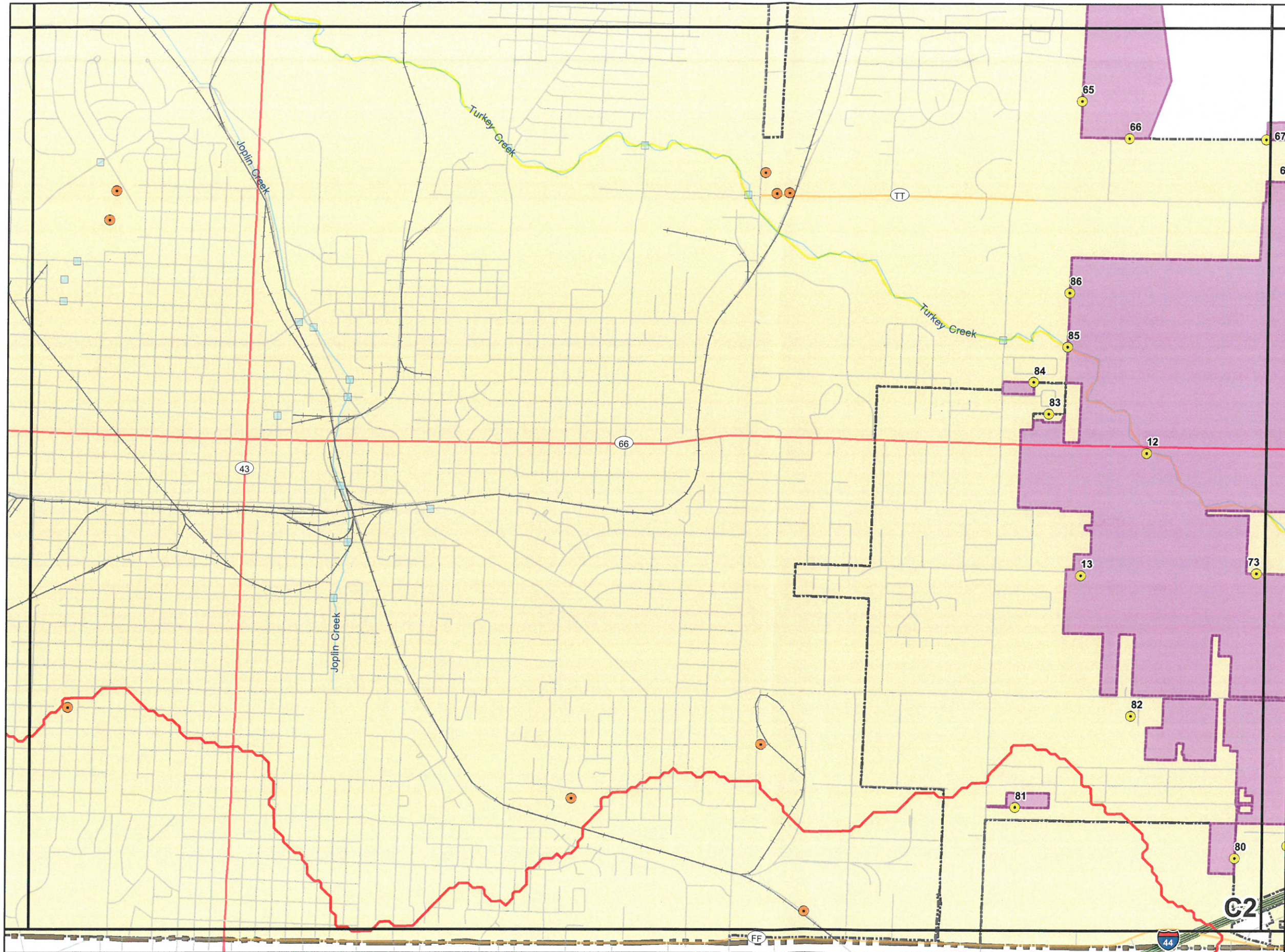
1 inch = 2,000 feet



Tri-State Engineering  
702 S Main • Joplin, MO 64801  
Phone: (417) 781-0643  
www.tristate-engineering.com

C1

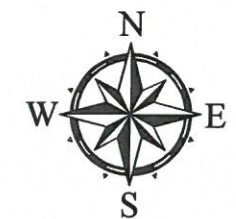
# Unincorporated Urbanized Areas in Jasper County, Missouri June 2016



- Detention
- Inactive Outfalls
- Active Outfalls
- Sampling Sites 2010
- DNR Outfalls
- ▭ Drainage Basins (Major)
- Bridges
- Rail Roads
- Streets
- Interstate
- State Highway
- Route
- U.S. Highway
- Unincorp. Urban Areas 2016
- Waterways
- 303d Impaired Streams 2016
- ▭ Jasper County Boundary
- ▭ Incorporated Areas 2016

The areas designated as Urbanized Unincorporated Areas are derived from the 2010 Census Urban Areas subtracting the areas that are presently within the limits of a municipality.

Map Date:  
June 8, 2016



1 inch = 2,000 feet



Tri-State Engineering  
702 S Main • Joplin, MO 64801  
Phone: (417) 781-0643  
www.tristate-engineering.com

# Unincorporated Urbanized Areas in Jasper County, Missouri June 2016

- Detention
- Inactive Outfalls
- Active Outfalls
- Sampling Sites 2010
- DNR Outfalls
- ▭ Drainage Basins (Major)
- Bridges
- Rail Roads
- Streets
- Interstate
- State Highway
- Route
- U.S. Highway
- Unincorp. Urban Areas 2016
- Waterways
- 303d Impaired Streams 2016
- ▭ Jasper County Boundary
- ▭ Incorporated Areas 2016

The areas designated as Urbanized Unincorporated Areas are derived from the 2010 Census Urban Areas subtracting the areas that are presently within the limits of a municipality.

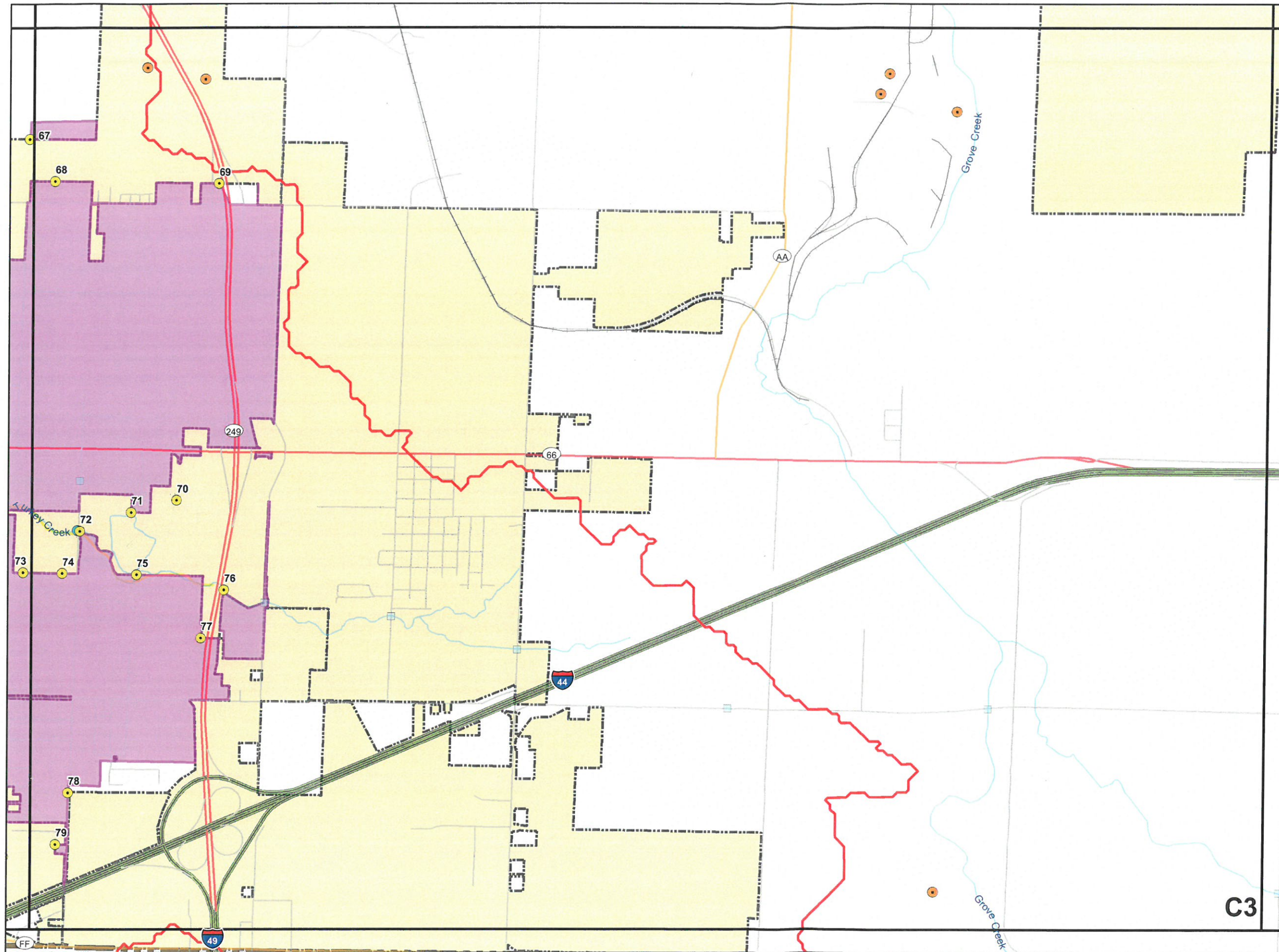
Map Date:  
June 8, 2016



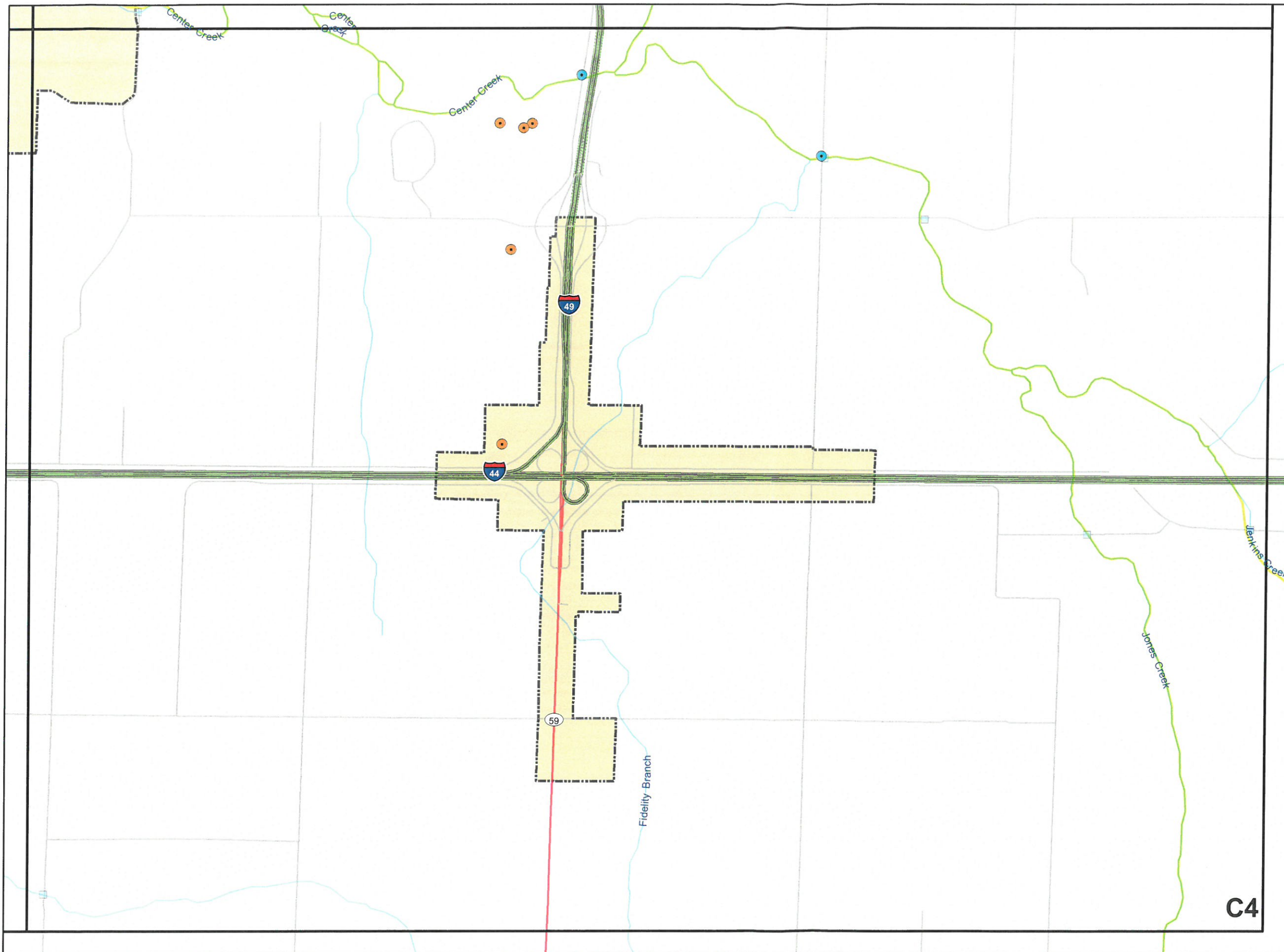
1 inch = 2,000 feet



Tri-State Engineering  
702 S Main • Joplin, MO 64801  
Phone: (417) 781-0643  
[www.tristate-engineering.com](http://www.tristate-engineering.com)



C3

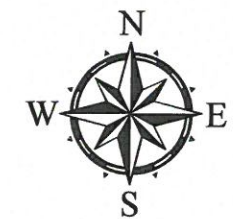


## Unincorporated Urbanized Areas in Jasper County, Missouri June 2016

- Detention
- Inactive Outfalls
- Active Outfalls
- Sampling Sites 2010
- DNR Outfalls
- Drainage Basins (Major)
- Bridges
- Rail Roads
- Streets
- Interstate
- State Highway
- Route
- U.S. Highway
- Unincorp. Urban Areas 2016
- Waterways
- 303d Impaired Streams 2016
- Jasper County Boundary
- Incorporated Areas 2016

The areas designated as Urbanized Unincorporated Areas are derived from the 2010 Census Urban Areas subtracting the areas that are presently within the limits of a municipality.

Map Date:  
June 8, 2016



1 inch = 2,000 feet



Tri-State Engineering  
702 S Main • Joplin, MO 64801  
Phone: (417) 781-0643  
[www.tristate-engineering.com](http://www.tristate-engineering.com)

C4